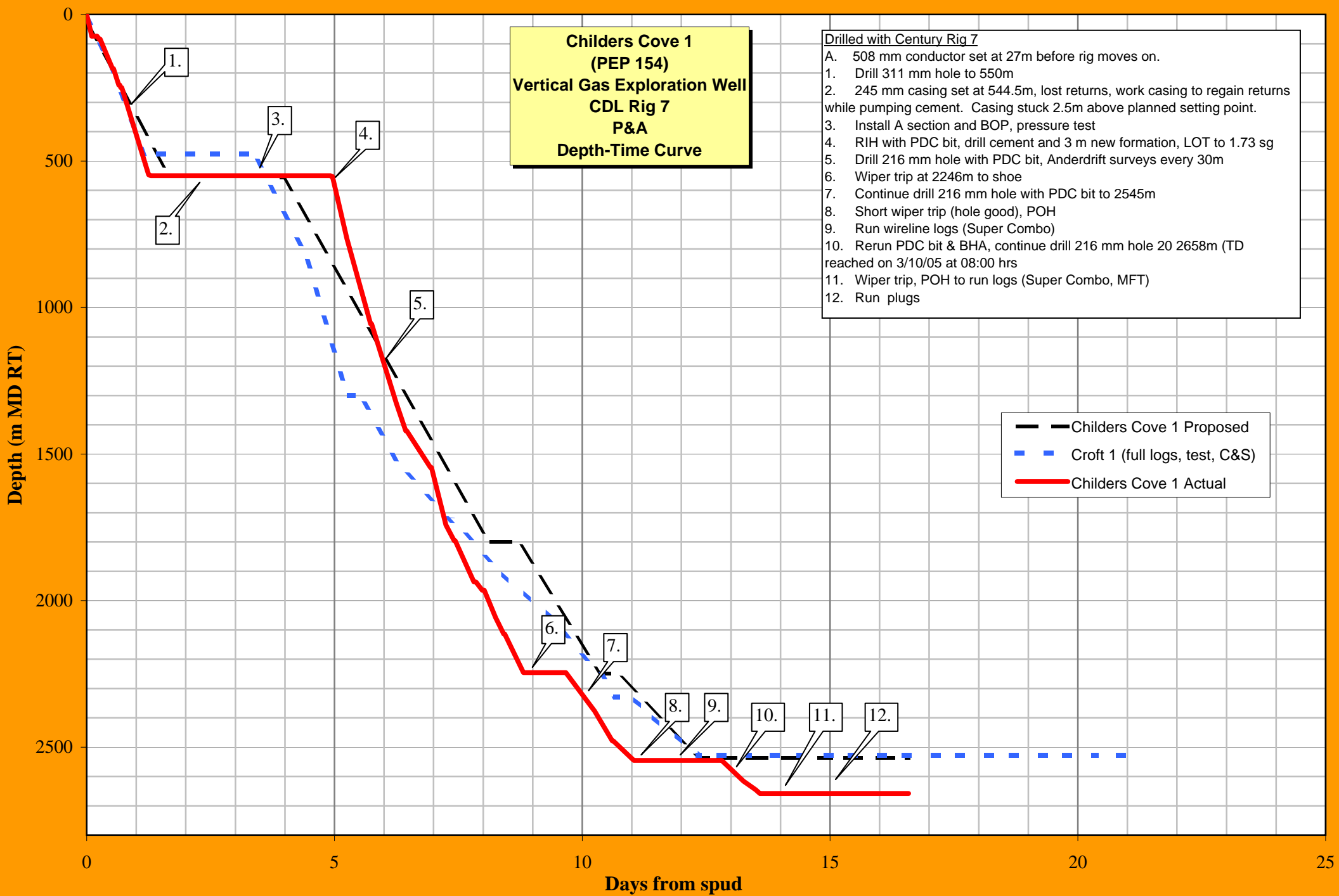


**Childers Cove 1
(PEP 154)
Vertical Gas Exploration Well
CDL Rig 7
P&A
Depth-Time Curve**

- Drilled with Century Rig 7
- A. 508 mm conductor set at 27m before rig moves on.
 1. Drill 311 mm hole to 550m
 2. 245 mm casing set at 544.5m, lost returns, work casing to regain returns while pumping cement. Casing stuck 2.5m above planned setting point.
 3. Install A section and BOP, pressure test
 4. RIH with PDC bit, drill cement and 3 m new formation, LOT to 1.73 sg
 5. Drill 216 mm hole with PDC bit, Anderdrift surveys every 30m
 6. Wiper trip at 2246m to shoe
 7. Continue drill 216 mm hole with PDC bit to 2545m
 8. Short wiper trip (hole good), POH
 9. Run wireline logs (Super Combo)
 10. Rerun PDC bit & BHA, continue drill 216 mm hole 20 2658m (TD reached on 3/10/05 at 08:00 hrs
 11. Wiper trip, POH to run logs (Super Combo, MFT)
 12. Run plugs



- - - Childers Cove 1 Proposed
 - - - Croft 1 (full logs, test, C&S)
 - - - Childers Cove 1 Actual

FIGURE 4